

# Concerto for Viola and Orchestra

Violin I

In Loving Memory of Elizabeth Parella  
Dedicated to Hong-Mei Xiao  
Special Thanks to Warren Cohen and his wife Carolyn Whitaker

Marc Parella

1  $\text{♩} = 110 \mid \text{♩} = 165 \mid \text{♩} = 330$

*pp*

4

7 *divisi*

*p*

10 **A**

*mf*

13

*f cresc.*

16

*ff*

20 **B** *non divisi*

*sfz*

*unison*

*p cresc.*

24

*p cresc.*

27

*p sub.* *mf cresc.* *fff*

**Piú Mosso (Tempo II)**

$\text{♩} = 120 \mid \text{♩} = 180 \mid \text{♩} = 360$  *divisi*

31 C

*pp* *pp*

43

*pp tr* *ppp* *pp*

49

52

**4**

58 **D**

*mf* *pp*

64

*pp*

67

*divisi* *p* *divisi* *p*

73

*divisi* *unison* *p*

78 **E** **Accel.**

*p*

Violin I

Tempo I  $\text{♩} = 110 \mid \text{♩} = 165 \mid \text{♩} = 330$  *divisi* *unison*

*f* *sfz* *f cresc.* *ff*

85 *divisi*

*ff*

87 **F**

89 **Ritenu** **Meno Mosso**  $\text{♩} = 76$

*p sub.* *divisi in 4* *p*

92 **Senza Misura e Poco Rubato**

*ppp*

96 **A Tempo con Misura** **4** *unison*

*pp*

103 **G** *divisi* *tr*

*pp*

107 **4** **2** *unison* **10**

**Tempo II** ♩. = 130 | ♩. = 195 | ♩. = 390

114 **10** **8** **2**  
*p sub.*

118 **H** *p* *sfz* *p* *divisi*

124 *p* *spiccato* *p cresc.*

128

131 *sfz* *sfz* *sfz* *p* **I**

134 **12** **8** **10** **8**

137 **12** **8** **10** **8**

140

*p*

143

*p*

146

*p* *f* *p*

149

*f* *p* *pp sub.* *tr* *divisi* *sfz* 2

155 **J**

pp unison cresc. p

Detailed description: This block contains the first two staves of music. Staff 155 starts with a treble clef, a key signature of one sharp (F#), and a dynamic marking of *pp*. It features a series of chords and intervals, with a *unison* marking above the staff. A *cresc.* (crescendo) marking is placed below the staff, and a *p* (piano) marking is at the end of the staff. Staff 160 continues the melodic line with a *f* (forte) dynamic marking.

160

*f*

Detailed description: This block contains staff 160, which continues the melodic line from the previous staff. It features a *f* (forte) dynamic marking.

165 **K**

*cresc.*

Detailed description: This block contains staff 165, which begins with a treble clef and a key signature of one flat (Bb). It features a *cresc.* (crescendo) marking and a series of eighth notes with accents.

168

*ff*

Detailed description: This block contains staff 168, which features a *ff* (fortissimo) dynamic marking and a series of chords with accents.

171

*ff* unison

Detailed description: This block contains staff 171, which features a *ff* (fortissimo) dynamic marking and a *unison* marking. It includes a time signature change from 12/8 to 10/8.

Viola solo

175

*ff* *sfz*

Detailed description: This block contains staff 175, which is labeled "Viola solo". It features a *ff* (fortissimo) dynamic marking and a series of chords with *sfz* (sforzando) markings.

179 **L**

*sfz* *con sordino* *p*

Detailed description: This block contains staff 179, which starts with a treble clef and a key signature of one sharp (F#). It features a *sfz* (sforzando) marking, a *con sordino* (with mute) marking, and a *p* (piano) dynamic marking. It includes a measure rest of 6 measures.

189

*sfz* *senza sordino* *2*

Detailed description: This block contains staff 189, which features a *sfz* (sforzando) marking and a *senza sordino* (without mute) marking. It includes two measure rests of 2 measures each.

196 *f* *divisi in 4* *p*

200 *f* *decresc.*

205 *unison* *Ritard.* *pp*

211 **Tempo I** ♩ = 110 | ♪ = 165 | ♫ = 330 *p* *mf* *p*

216 *G#*

221 **N** *pp*

226 *non divisi* *pp*

232 *pp*

237 *pp*

242

248

254

*cresc.*

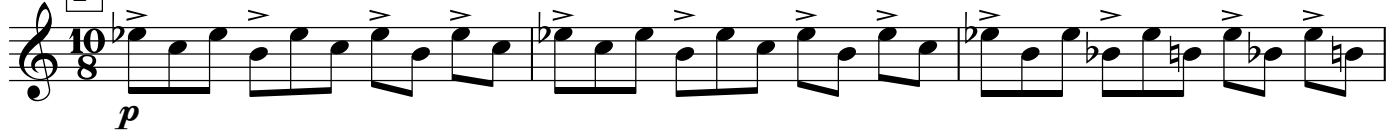
258 0 *divisi*

262

266

Tempo I ♩. = 110 | ♩ = 165 | ♩ = 330

271 **P** *unison*



274



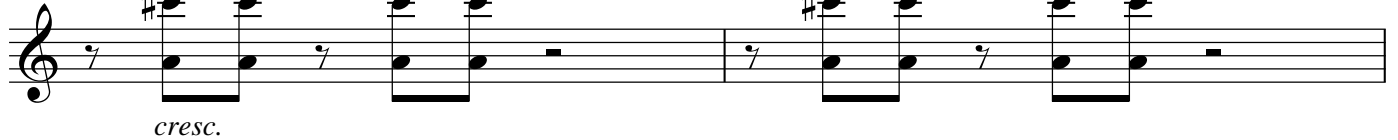
277



281



285



287



290 **Q** *naturale*

*f* *fp*

293

*8va*  
*decresc.*

296

*p*

300

*cresc.*

303

*f* *divisi*

306

*ff* *pp* *ppp*