

Percussion II

III

♩ = 120 ♩ = 360

1 **2** **Glsp**
p

7
mf

11 **5**
mf *mf*

19 **A** **4** **5** suspended cymbal
p

31 **B** **Xyl**
ff

34 *gliss.*

37

39 **3+2+3** **3+3+2** **3+3+2**

42 **12/8** *sfz* *sfz* *sfz* *sfz* *sfz* *sfz* *sfz* *sfz*

44 **C**
4
f *p* *mf* *mf*

53 **D**
3
mf

59 **Glsp**
p
3 2

67 *mf*
3

75 **E**
4 6 **Xyl**
12/8
p

86 **F**
3
mf

90

92
4 2

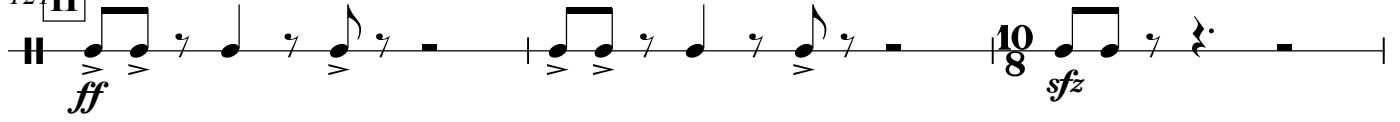
101 **G**
2

103
11 *f* 2 *f*

119



121 **H**



124

